

Site Plan

Cherryville

MISSION

- A** 3 Bed, 2 Bath & 1 Powder
1,544 Sq Ft
- B** 3 Bed, 2 Bath & 1 Powder
1,478 Sq Ft
- C** 3 Bed, 2 Bath & 1 Powder
1,478 Sq Ft
- D** 3 Bed + Den, 2 Bath & 2 Powder
1,872 Sq Ft



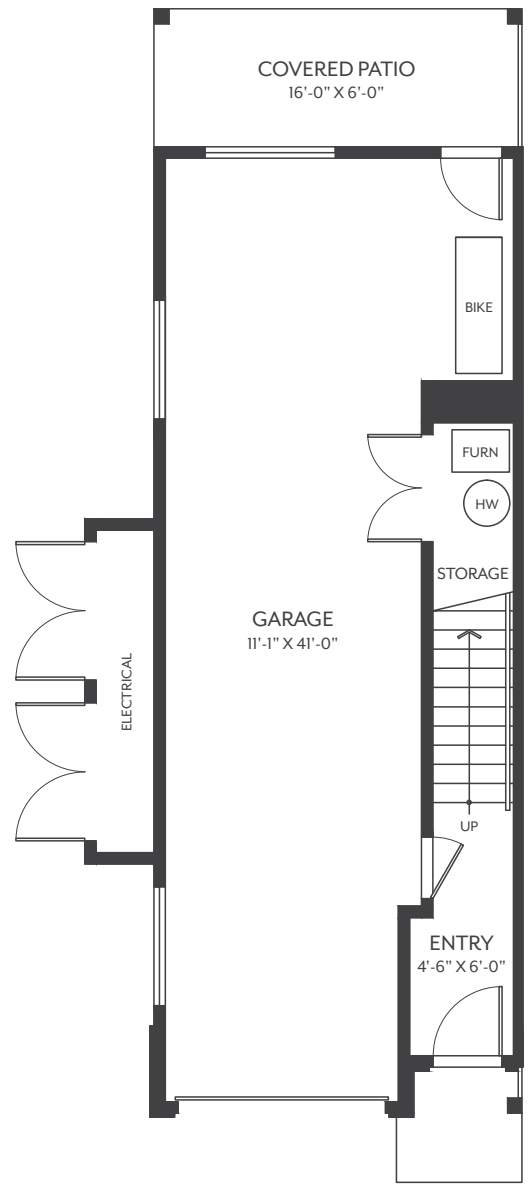


3 Bed, 2 Bath & 1 Powder
1,544 Sq Ft

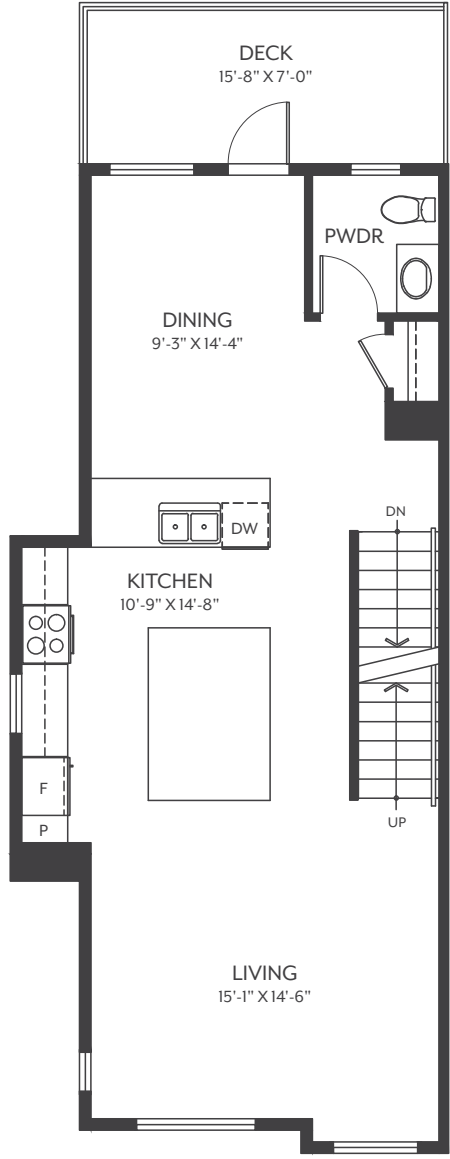
Cherryville

MISSION

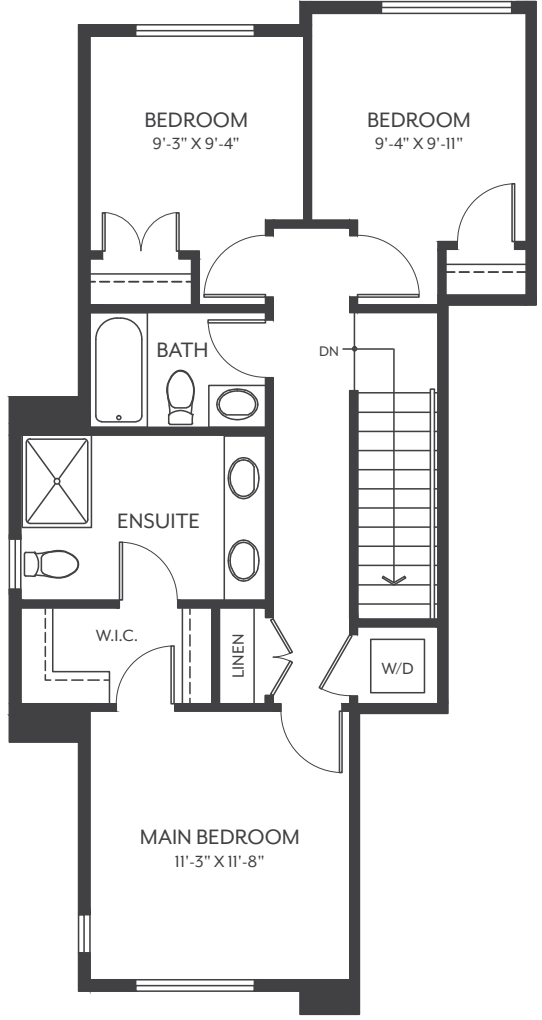
UNIT 1
REVERSE UNIT 18



Lower



Main



Upper

Dimensions, sizes, specifications, layouts and materials are approximate only and subject to change without notice. Please see sales team for more details. E.&O.E.

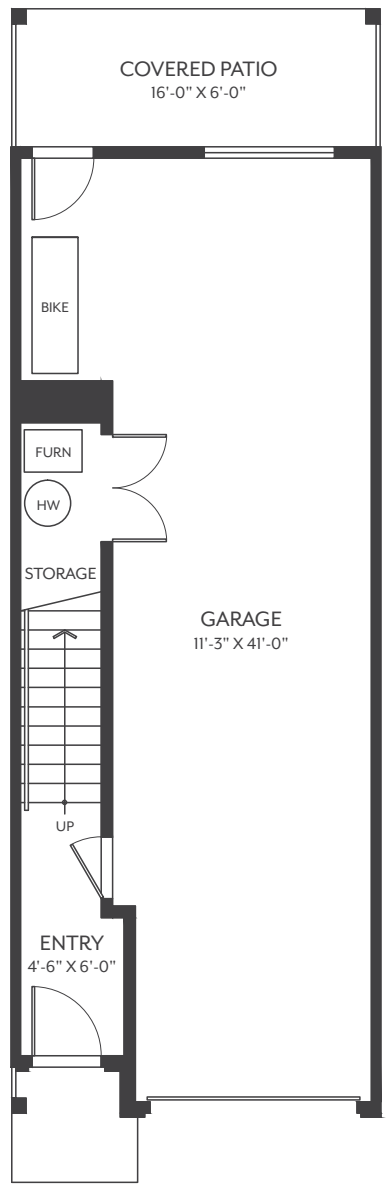
B

3 Bed, 2 Bath & 1 Powder
1,478 Sq Ft

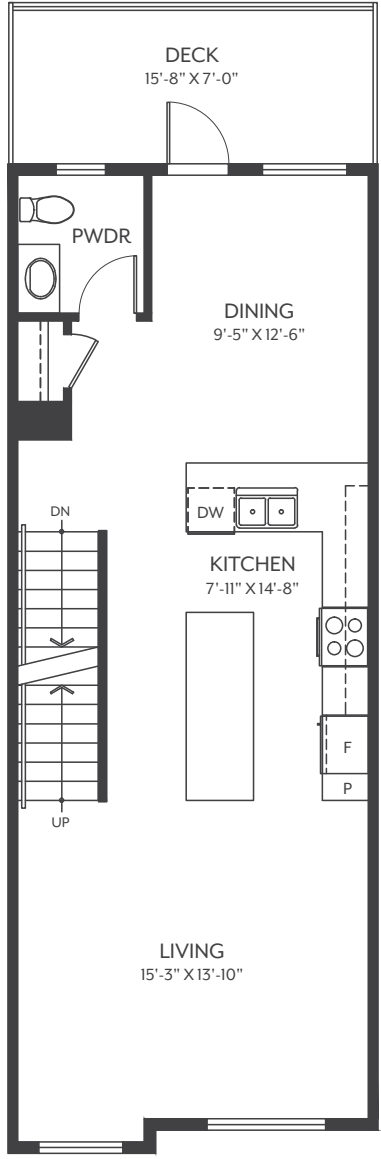
Cherryville

MISSION

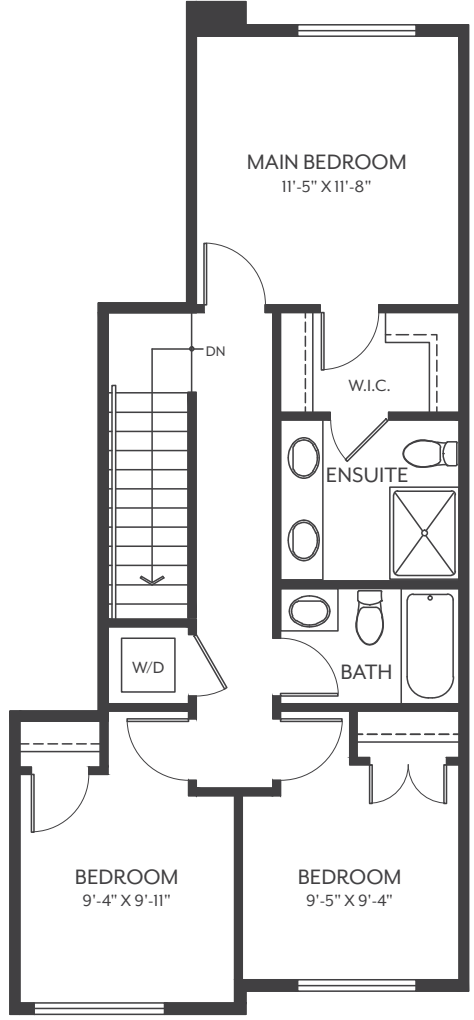
UNITS 2, 4, 8, 10, 14, 16, 24, 26, 30, 37, 39, 43
REVERSE UNITS 3, 5, 9, 11, 15, 17, 21, 25, 27, 31, 34, 38, 40, 44
UPPER LEVEL MIRRORED UNITS 20, 33



Lower



Main



Upper

Dimensions, sizes, specifications, layouts and materials are approximate only and subject to change without notice. Please see sales team for more details. E.&O.E.

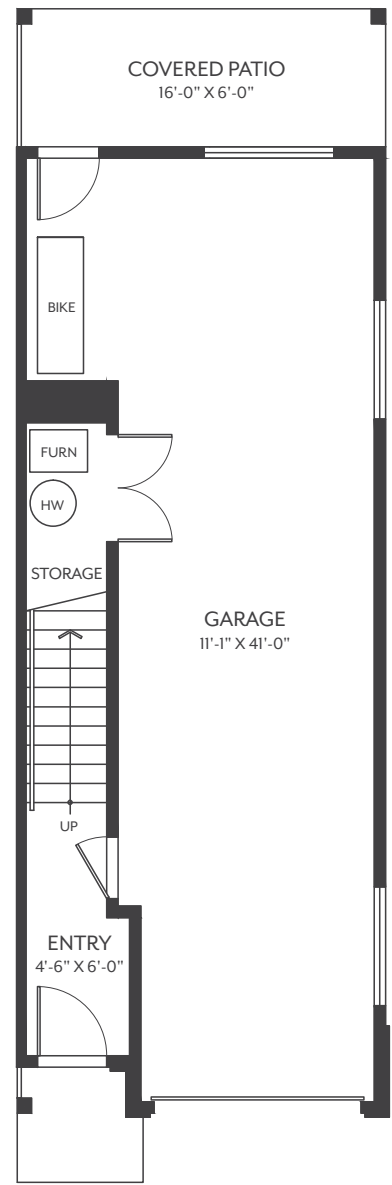


3 Bed, 2 Bath & 1 Powder
1,478 Sq Ft

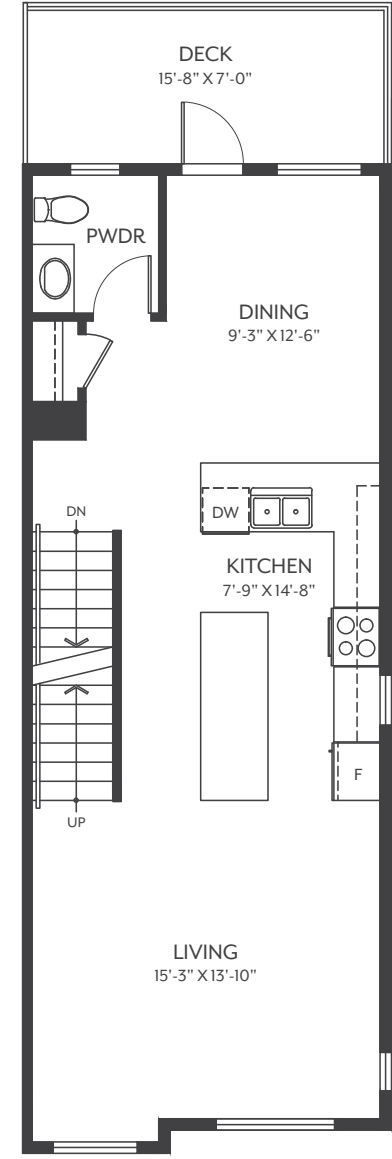
Cherryville

MISSION

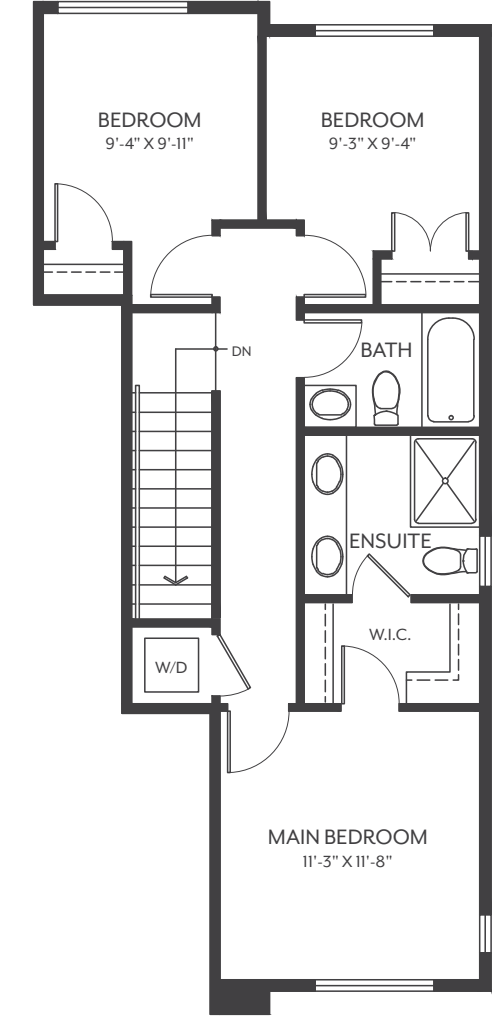
UNITS 6, 12, 22, 28, 35, 41
REVERSE UNITS 7, 13, 23, 29, 36, 42



Lower



Main



Upper

Dimensions, sizes, specifications, layouts and materials are approximate only and subject to change without notice. Please see sales team for more details. E.&O.E.

D

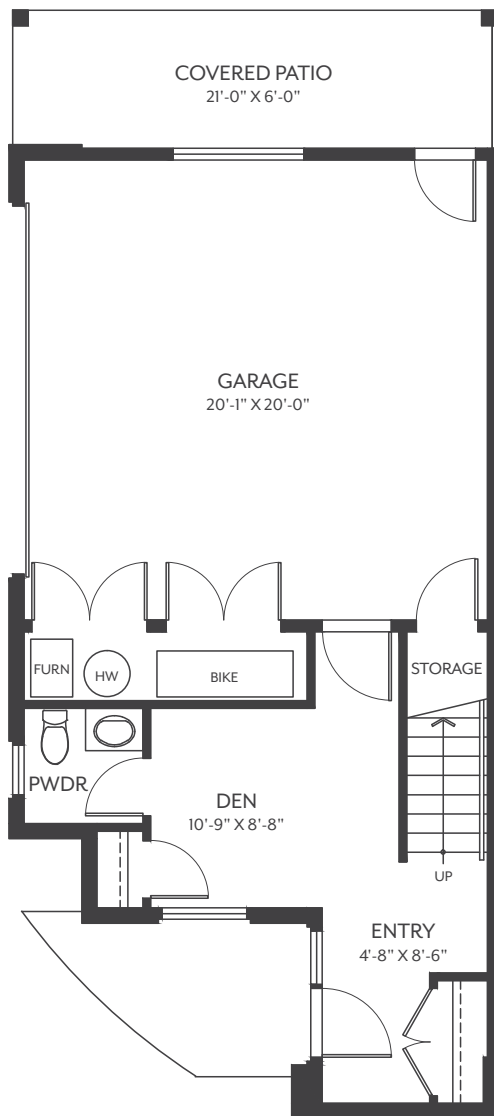
3 Bed + Den, 2 Bath & 2 Powder
1,872 Sq Ft

Cherryville

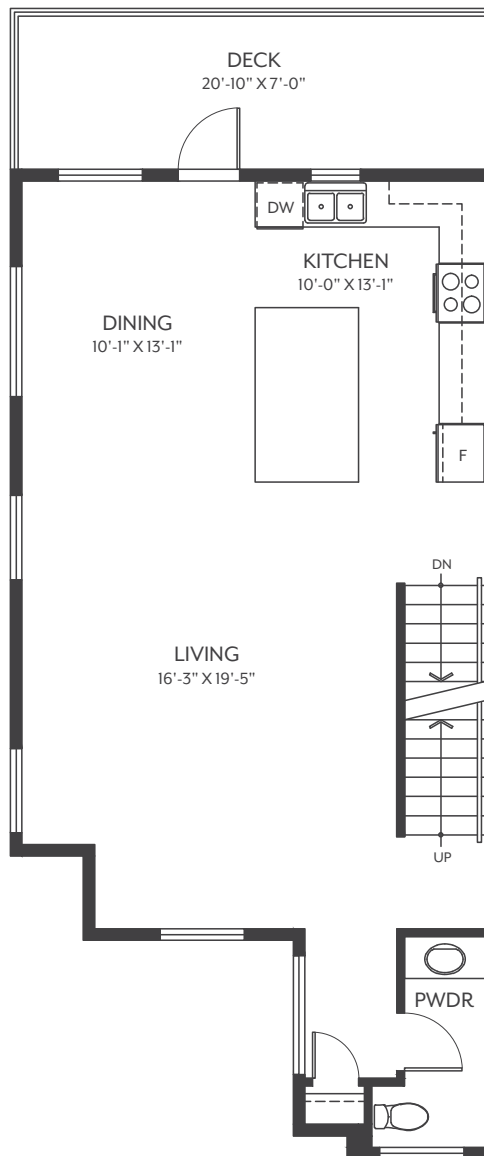
MISSION

UNITS 19, 32

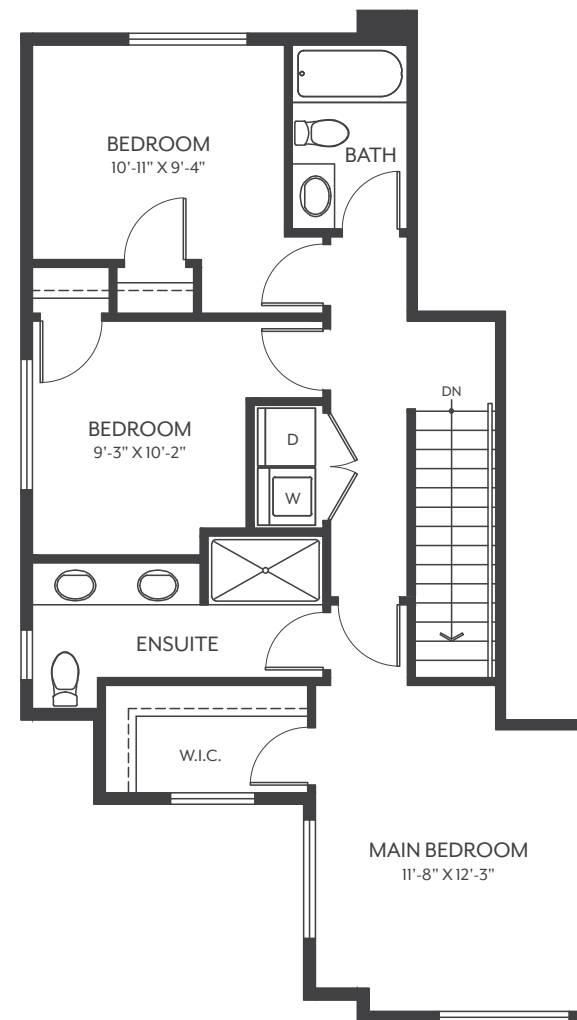
REVERSE UNIT 45



Lower



Main



Upper